

38/5 The Avenue Mount Drutt NSW

1  1  1 

Located for extreme convenience, this modern open plan living one bedroom apartment will be an attractive purchase to a range of savvy buyers from first home buyers, down-sizers or investors. It's within a central location from Train Station, Westfield Shopping Centre, Hospital, Parks, Bus Stops, Schools

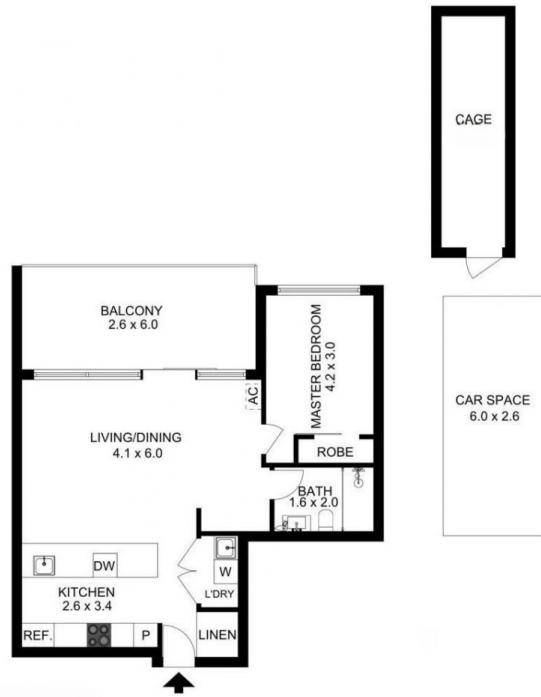
Price : \$375,000 - \$410,000
Building Size : 73 sqm
View : <https://www.prestigeestatesgroup.com.au/sale/nsw/western-sydney/mount-drutt/residential/apartment/8050016>

This well positioned third-floor apartment, elevated leafy outlook with an abundance of natural light, reveals a chic contemporary aesthetic with neutral tones and high-quality details. Wood floorings throughout, Spacious open plan living area extending to huge balcony, big size bedroom with built-in robe, gas cooking kitchen with large breakfast bar



Mina Wang
02 9652 5603

Main Features:



The floor plan is not to scale; measurements are indicative and in metres. Exterior elements are not in position. Plans should not be relied on. Interested parties should make and rely on their own enquiries.