






2 Woodvale Place Castle Hill NSW

6  4  2 

Revealing an ultra-contemporary property, culminating in a breathtaking sense of space and grandeur, this sprawling family haven in one of Castle Hill's best streets, First Farm Drive Estate, walking distance to Castle Towers shopping center, Metro station & bus stops, parks and schools.

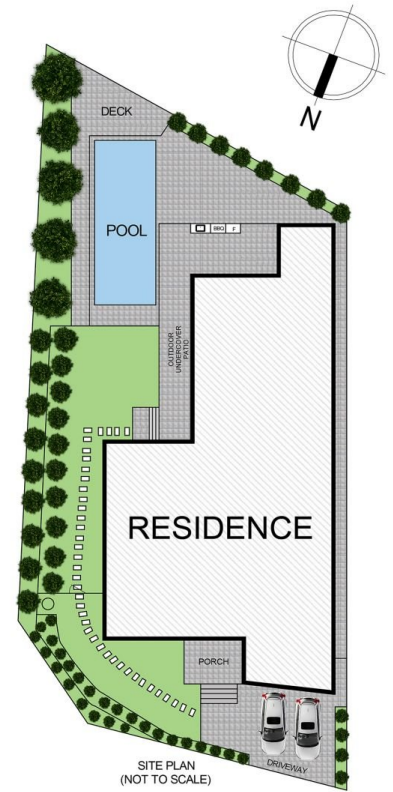
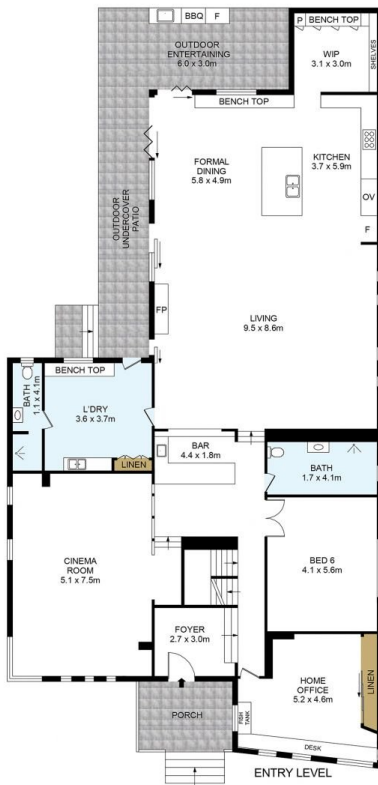
With a solid double brick construction and veneer interior, cement rendered with Rock coat finish on top, this 6-bedroom residence sits on a high-side corner block of 916sqm(approx.) in the North-East aspects, lush parks outlook and ultimate privacy. Considered layout creating a seamless indoor/outdoor lifestyle with luxurious flow, this modern spacious family home is perfect for the multi-generational family.

Type : House
Price : Just Listed
Building Size : 475 sqm
Land Size : 916 sqm
View : <https://www.prestigeestatesgroup.com.au/sale/nsw/hills/castle-hill/residential/house/8145167>



Mina Wang
02 9651 5602

[For full version visit the website](https://www.prestigeestatesgroup.com.au)



2 Woodvale Place, Castle Hill

Disclaimer

Floor Plan measurements are approximate and are for illustrative purposes only. While we cannot doubt the floor plans accuracy, we make no guarantee, warranty or representation as to the accuracy and completeness of the floor plan

